

Exemption from Tender, Contract Variations and Revised Project Scope - Woolloomooloo Playground

File No: X025427.001

Summary

This report outlines the proposed revised scope of works for the playground refurbishment at Woolloomooloo Playground, Woolloomooloo. It also outlines the area of scope for Pring Street / Dowling Street, Woolloomooloo to develop design options for future consultation with the community.

The report recommends an increase in the project budget for the revised scope of works as outlined, an exemption from tender with approval to vary the existing contracts for the Head Design Consultant and Head Construction Contractor to complete the revised works and to develop the design options for the Pring Street/Dowling Street works.

Woolloomooloo Playground is located adjacent to Dowling Street and Pring Street, Woolloomooloo. Woolloomooloo Playground was initially identified for renewal as part of the Asset renewal program. In October 2020, Council endorsed a project scope and design for the playground upgrade.

At the notification of construction, the community requested that Council revisit the design and in November 2022 Council resolved to request that the Chief Executive Officer re-engage with the community.

The key principles of the Woolloomooloo Playground revised scope remain in line with the original endorsed scope. These include, to renew the playground to provide a local scale play space which maximises play opportunities for children of different ages and abilities, improve access in and around the park, increase activation and passive surveillance, improve lighting conditions and use simple, robust, high-quality material which reflects the local neighbourhood character.

The revised concept design addresses key community concerns around children and pedestrian safety. The previously proposed Pring Street stairs, playground entrance and associated path were removed in response to these concerns. Feedback was also received from the community regarding playground size, play experience and equipment catering for a broader age group and available green space. These were also considered and addressed in the revised concept plan.

The revised concept includes the following works:

- retains the existing size of the playground and provides a local scale play space that maximises play opportunities for children 0-11+ years.
- fully fenced playground with one entry gate facing the BBQ area;
- Playground fence to include park name;
- a new play structure with climbing net and slides;

- a new swing set with one toddler seat and one basket swing, a multi-user see-saw, an individual springer and a spinner, monkey bars, a climbing net carousel and a rock climbing structure;
- nature play including stepping stones and logs, cluster poles, sandstone boulders and scrambling net;
- new plants and trees within the playground;
- new soft-fall across the play area;
- retention of the existing shade structure;
- a range of seating opportunities within the playground and the BBQ area, in both sun and shade locations, including picnic platforms and bench seats with backs and arm-rests;
- larger grass area adjacent to the BBQ;
- new bin and bubbler with dog bowl;
- new park signage;
- improved lighting; and
- new maintenance vehicle access to tennis courts;

Community feedback received in late 2022, also requested that Council further consider areas outside the park and playground, these included;

- consider community safety concerns for pedestrians on Pring Street, particularly for school children moving between the school, park and McElhone Steps.
- consider the public realm on Dowling Street between the school and the playground.
- Install public toilets nearby (subject to Development Application).

This report proposes that further investigations and design options be developed for further consultation with the community for the public realm and roadway of Pring Street / Dowling Street school drop off area. Noting, if supported, further approval will then be sought from Transport for NSW and endorsement from the Local, Pedestrian, Cycling and Traffic Calming Committee and Council.

The installation of Automated Public Toilets nearby in Sydney Place is subject to a Development Application which will be considered by the Local Planning Panel in the coming months.

The revised concept plan describes the scope of works for Woolloomooloo Playground revised concept plan and outlines the area of Pring Street / Dowling Street, Woolloomooloo school drop off area which is being investigated for improvement. The consultation was on exhibition from 10 May and 8 June 2023, and included a community presentation.

Community feedback was broadly in support of the revised scope as outlined in Attachment C, with community suggestions to be investigated and where possible incorporated into detailed design.

This report describes the revised landscape design for Woolloomooloo Playground upgrade, following further community consultation recently being completed. The works are required to improve aging infrastructure and satisfy community feedback to improve amenity and safety.

This report seeks the endorsement of the revised project scope. It also seeks to increase the project budget, an exemption from tender and variation of the existing head design consultant and head construction contracts required to complete the Woolloomooloo Playground upgrade and develop design options for further consultation with the community for the Pring Street / Dowling Street, Woolloomooloo school drop off area.

Recommendation

It is resolved that:

- (A) Council endorse the revised scope of work for improvements to Woolloomooloo Playground as described in the subject report and shown in the revised concept design at Attachment B to the subject report, for progression to relevant approvals, preparation of design, documentation and construction;
- (B) Council note the forecast costs and financial implications as outlined in Confidential Attachment D to the subject report;
- (C) Council approve the additional project budget for the Woolloomooloo Playground project as outlined in Confidential Attachment D to the subject report;
- (D) Council approve an exemption from tender in accordance with section 55(3)(i) of the Local Government Act 1993 for the existing head design consultancy contract with Spackman Mossop Michaels Pty Limited and head construction contract with Quality Management & Constructions Pty Limited to expand the scope of each contract to include the revised scope of work endorsed by this report;
- (E) Council note that a satisfactory result would not be achieved by inviting tenders because:
 - (i) a competitive process has already been undertaken in relation to the provision of these head design consultancy and head construction services; and
 - (ii) there will be time and value for money implications if a separate tender process was undertaken for the provision of the additional scope of works;
- (F) Council approve:
 - (i) a contract variation with Spackman Mossop Michaels Pty Limited for the provision of the additional head design consultancy services for the price outlined in Confidential Attachment D to the subject report; and
 - (ii) a contract variation with Quality Management & Constructions Pty Limited for the provision of the additional head construction services for the price outlined in Confidential Attachment D to the subject report;
- (G) authority be delegated to the Chief Executive Officers to finalise, execute and administer the contract variations with Spackman Mossop Michaels Pty Limited and Quality Management & Constructions Pty Limited to give effect to the resolutions above;
- (H) Council note the revised total contract sums for the contracts with Spackman Mossop Michaels Pty Limited and Quality Management & Constructions Pty Limited as outlined in Confidential Attachment D to the subject report; and

- (l) Council endorse the Pring Street / Dowling Street, Woolloomooloo school drop off area as described in the subject report and shown in the revised concept design at Attachment B to the subject report for preparation of concept design options for consultation and a further report to Council.

Attachments

- Attachment A.** Location Plan and Existing Site Photos
- Attachment B.** Revised Concept Plan
- Attachment C.** Engagement Feedback Table
- Attachment D.** Financial Implications (Confidential)

Background

1. The Woolloomooloo Playground is located adjacent to Dowling Street and Pring Street, Woolloomooloo. Woolloomooloo Playground was initially identified for renewal as part of the Asset renewal program. In October 2020, Council endorsed project scope and design for the playground upgrade.
2. At the notification of construction, the community requested to revisit the design and in November 2022, Council resolved to request that the Chief Executive Officer re-engage with the community.
3. The report confirms the following background items, which remain relevant and have been updated to reflect the proposed revised design outlined in this report.
4. The City has an ongoing small parks and playgrounds improvement program for parks that are in need of upgrade or enhancement works, replacement of end-of-life equipment, and to provide appropriate facilities for local residents.
5. Woolloomooloo Playground, Woolloomooloo is bounded by Dowling Street, to the west, Pring Street to the north, Sydney Place to the south and Residents to the east.
6. The land is owned by the City of Sydney.
7. Woolloomooloo Playground was identified for an upgrade due to the playground's overall condition, including failing play equipment and soft-fall surfacing, the limited range of play experiences and seating provision offered, poor integration and passive surveillance with adjacent park areas, and poor access in and around the playground.
8. During the 1930s-40s tennis courts, a small playground and an amenities building were constructed on a 'vacant plot of land' between Dowling Street and McElhone Street. The amenities building was upgraded and extended in 1957 to include additional toilets, storage facilities and an assembly room with a stage. In 1982 the streets surrounding Woolloomooloo Playground were closed and rezoned; McElhone Street (between Pring Street and Sydney Place) changed from road reserve to residential, and both Dowling Street and Sydney Place were transformed into pedestrian plazas. Subsequently the park was re-designed with the amenities building removed.
9. The park was later upgraded again in 1992 and in the early 2000's, a new playground, BBQ area and community garden were installed to the west of the tennis and basketball courts on what was previously a turf area.
10. The park is well used by a variety of community members for play, rest, relaxation and exercise, however some anti-social behaviour has been reported. The upgrade aims to improve access and amenity as well as safety.
11. The playground is characterised as a large, shaded and fenced neighbourhood playground catering for children of all ages. Planting is limited to one *Populus deltoides* tree. Access to the playground is via the picnic space which has a BBQ and small turf area surrounded by trees. The upgrade site is approximately 1,152 square metres.

12. The existing play equipment includes a seesaw, a rocker, a spinner, a set of pull-up bars, two balancing beams, a toddler play structure with a ladder, tower and telescope, and two older child's play structures with slides and climbing nets. Seating within the play-space is limited.
13. A community basketball court and tennis court are located within the park. Minor works are proposed in the revised design to enable improved entry for maintenance vehicles to the tennis court and seating to the basket-ball court. Improvements to the play surface will also be undertaken during construction of the upgrade if required.
14. A community garden sits adjacent the playground within the park, no works are proposed to this area.
15. Consideration has been given to the provision of play equipment in surrounding parks within a 500 metre radius, to ensure a coordinated network of facilities that caters for a broad range of park users.
16. An Indigenous Cultural Consultant has been engaged as part of this upgrade process, to ensure that the project contributes to recognising the City's Indigenous heritage, celebrating Aboriginal and Torres Strait Islander cultures in the public domain, and enriching local knowledge about the cultural landscape.
17. The consultant has produced a 'Narratives' report, broadly identifying project opportunities to integrate Indigenous themes and narratives. The key themes and narratives for Woolloomooloo Playground include:
 - (a) Celebrating Matora, an initiated Gadigal woman and first wife of Bungaree.
 - (b) Provide a place where people can sit together / bring people together;
 - (c) Engage and educate the next generation;

Revised Concept Design

18. In early 2023, the playground and park design was revised to address key community concerns around children and pedestrian safety.
19. The previously proposed Pring Street stairs, playground entrance and associated path were removed from the previously endorsed scope (October 2020) in response to these concerns. Feedback was also received from the community regarding playground size, play experience and equipment catering for a broader age group and available green space. These were also considered and addressed in the revised concept plan.
20. Comprehensive feedback from the community on the construction notification is outlined in Attachment C.
21. The revised concept includes the following works:
 - (a) retains the existing size of the playground and provides a local scale play space that maximises play opportunities for children 0-11+ years.
 - (b) fully fenced playground with one entry gate facing the BBQ area;
 - (c) Playground fence to include park name;

- (d) a new play structure with climbing net and slides;
 - (e) a new swing set with one toddler seat and one basket swing, a multi-user see-saw, an individual springer and a spinner, monkey bars, a climbing net carousel and a rock climbing structure;
 - (f) nature play including stepping stones and logs, cluster poles, sandstone boulders and scrambling net;
 - (g) new plants and trees within the playground;
 - (h) new soft-fall across the play area;
 - (i) retention of the existing shade structure;
 - (j) a range of seating opportunities within the playground and the BBQ area, in both sun and shade locations, including picnic platforms and bench seats with backs and arm-rests;
 - (k) larger grass area adjacent to the BBQ;
 - (l) new bin and bubbler with dog bowl;
 - (m) new park signage;
 - (n) improved lighting; and
 - (o) new maintenance vehicle access to tennis courts, including surfacing improvements to both basketball / tennis courts as required;
- 22.** Community feedback was broadly in support of the revised scope as outlined in Attachment C, with community suggestions to be investigated and where possible incorporated into detailed design.
- 23.** For Woolloomooloo Park and playground, this included:
- (a) A community mural on the inside wall of the playground;
 - (b) Upgrade tennis and basketball surface including reinstating the snake/eel print on the basketball court;
 - (c) Increase seating in BBQ area;
 - (d) Extend seating wall on the basketball court;
 - (e) Particular play equipment such as water-play, binoculars, flying fox and 'Hamster wheel'
- 24.** The following tree management and planting is proposed as part of the park works:
- (a) Retain and protect all existing trees;
 - (b) Improve the existing surface treatment around the *Populus deltoides* existing within the play area to manage tree health and minimise trip hazards;

- (c) Provide additional planting and new trees within the play area and provide supplementary planting as required;
 - (d) Preparation of an Arboricultural Impact Assessment and Tree Protection Plan to inform the detailed design and ensure appropriate construction methodology when installing equipment and soft-fall;
25. Appropriate environmental assessment and approval processes will be undertaken in accordance with the Environmental Planning Assessment Act 1979.
26. The park/playground design will be subject to a Part 5 approval process which includes an Environmental Impact Assessment report to be completed. No Development Application is required.

Community requested additional scope

27. Community feedback received in late 2022, also requested that Council further consider areas outside the park and playground, this included:

Pring Street / Dowling Street

- (a) Consider community safety concerns for pedestrians on Pring Street, particularly for school children moving between the school, park and McElhone Steps;
 - (i) Installation of temporary safety measures to more clearly identify Pring Street as a shared zone, including new speed limit markings and temporary paint/ planters at crossing points.
 - (ii) Installation of boundary measure to prevent direct access from Park entry ramp onto Pring Street to stop children riding down the ramp and straight onto road.
- (b) Consider the public realm on Dowling Street between the school and the playground.

Public Toilet

- (c) Install new park toilets nearby (subject to Development Application).
 - (d) Community requested the toilet to be within line of sight of the playground.
28. Design options to be developed for consultation with the community for the Pring Street / Dowling Street school drop off area. Noting, if supported, further approval will then be sought from Transport for NSW, and endorsement from the Local, Pedestrian, Cycling and Traffic Calming Committee and Council.
29. The installation of Automated Public Toilets nearby in Sydney Place is subject to a Development Application going up for assessment at the Local Planning Panel in the coming months.

Head Consultants and Construction Contracts

30. In 2020 through an open tender process, the contract for head design consultancy services for the design of the Stage 15: Upgrade of Small Parks and Playground Group A (3 parks - including Woolloomooloo Playground, Woolloomooloo) was awarded to Spackman Mossop Michaels.

31. The construction works were contracted through an open tender process to head contractor Quality Management and Construction Pty Ltd in late 2022.
32. There is now a requirement for additional funds in the design consultancy contract to provide additional services. This is due to project delays and additional consultancy services including documenting the redesign, recertifying the playground, amending the lighting design and updating planning approvals.
33. Council note that a satisfactory result would not be achieved by inviting tenders from consultants or contractors for the revised playground design work because:
 - (a) Prior knowledge and pre-existing engagement within the project
 - (b) Extended program to engage consultants and construction contractors would delay works and increase project related costs;
34. Council note that a satisfactory result would not be achieved by inviting tenders from consultants for the Pring Street / Dowling Street Road and public domain scope of works because:
 - (a) Prior knowledge and pre-existing experience within the project for the playground and park works;
 - (b) The Pring Street / Dowling Street scope of works are an extension of the playground and park works in addition to road safety improvement;
 - (c) Extended program to engage consultants would delay works and increase project related costs;

Key Implications

Strategic Alignment - Sustainable Sydney 2030-2050 Continuing the Vision

35. Sustainable Sydney 2030-2050 Continuing the Vision renews the communities' vision for the sustainable development of the city to 2050. It includes 10 strategic directions to guide the future of the city, as well as 10 targets against which to measure progress. This plan is aligned with the following strategic directions and objectives:
 - (a) Direction 3 - Public places for all - this project will provide an improved open space infrastructure which meets the needs of a wide variety of user groups and provides opportunities for social interaction.
 - (b) Direction 4 - Design excellence and sustainable development - this project is part of a wider program of renewal of small parks across the city; it will provide an improved quality of open space infrastructure.

Organisational Impact

36. This upgrade to the park and playground will provide improved amenity and play experience for the community visiting the park. The replacement of the play assets, rectification of the wall and installation of handrails and balustrades on the stairs represent a mitigation of risk to the City. The assets will require ongoing maintenance.

37. The review of Pring Street / Dowling Street, Woolloomooloo school drop off area located adjacent Woolloomooloo Playground will investigate improved safety for pedestrians on Pring Street, particularly for school children moving between the school, park and McElhone Steps. Upgrade works will be subject to future Asset Renewal Program (FY25) considerations) if the community supports design concepts following consultation.

Risks

38. There is an ongoing risk of anti-social behaviour within the park. This includes potential vandalism of any works undertaken, drug-use related paraphernalia and general anti-social behaviour. Crime Prevention Through Environmental Design (CPTED) principles have been incorporated, including ensuring passive surveillance is achieved and appropriate lighting levels are provided.
39. Risks of not implementing the upgrade works include potential failure of play infrastructure and risk to the community. Daily inspections are carried out by the City as per standard parks and playground maintenance operations.
40. Risks of not implementing this scope of works could result in failure to meet community expectations.

Social / Cultural / Community

41. The site is an important open space within the Woolloomooloo area and has the only playground within a 400 metre radius. It is located 75 metres away from the Juanita Nielsen Community Centre and is adjacent to Plunkett Street School. Improving the amenity and play offering within the park represents an investment in this community, providing opportunities for people of different ages and abilities to use the park alongside each other.
42. An Indigenous Cultural Consultant has been engaged as part of this upgrade process, to ensure that the project works towards recognising the City's Indigenous heritage, celebrating Aboriginal and Torres Strait Islander cultures in the public domain, and enriching local knowledge about the cultural landscape.

Environmental

43. Protection and enhancement of the existing planting through this works is in line with the Urban Ecology Strategic Action Plan.

Financial Implications

44. Additional funds are required for this project to address design scope changes requested by the community for the park and playground upgrade and to address safety concerns in Pring Street / Dowling Street school drop off area.
45. Additional funds to cover the shortfall are requested from the future year Asset Renewal Program budgets as outlined in Confidential Attachment D.

Relevant Legislation

46. Local Government Act 1993 -Section 10A provides that a Council may close to the public so much of its meeting as comprises information that would, if disclosed, confer a commercial advantage on a person with whom the Council is conducting (or proposes to conduct) business.

47. Attachment D to the subject report contains confidential commercial information which if disclosed, would confer a commercial advantage on a person with whom Council is conducting (or proposes to conduct) business.
48. Discussion of the matter in an open meeting would, on balance, be contrary to the public interest because it would compromise Council's ability to negotiate fairly and commercially to achieve the best outcome for its ratepayers.
49. Environmental Planning and Assessment Act 1979. A review of the revised design and the existing Review of Environmental Factors will be carried out to ensure that all environmental impacts have been identified, assessed and, where required, action is identified to manage impacts. Appropriate approvals will be obtained where required.
50. State Environmental Planning Policy (Transport and Infrastructure) 2021
51. Sydney Local Environmental Plan 2012
52. Disability Discrimination Act 1992
53. Local Government Act 1993 for construction procurement.
54. NSW Roads Act 1993 for road related approvals.

Critical Dates / Time Frames

55. Current Program Dates:
 - (a) Community Consultation on Revised Concept Design June 2023
 - (b) Council Approval of Revised Concept Design June 2023
 - (c) Order Equipment (six months supply) July 2023
 - (d) Construction Start February 2024
 - (e) Construction Duration 20 weeks

Options

56. Project does not proceed - this option is not recommended as the current existing condition of the playground has a number of associated risks and compliance issues.
57. Proceeding with the previous endorsed scope of works - this option is not recommended due the community concerns as outlined in this report.

Public Consultation

58. Community consultation was undertaken on the previous scope including undertaking early engagement in November 2019 and public exhibition of the concept plan in July and August 2020.

59. In October 2020, Council endorsed project scope and design for the playground upgrade following two rounds of consultation with the community including a workshop with children at Plunkett Street Primary School and public exhibition (between 20 July and 24 August 2020).
60. At the notification of construction, the Community requested to revisit the design and on 21st November 2022, Council resolved to request that the Chief Executive Officer re-engage with the community to pursue the changes requested by the community.
61. As part of further consultation with the community, City staff undertook a workshop with Plunkett Street Public School students and a community workshop at Woolloomooloo playground in December 2022. Based on the feedback, the design was revised.
62. Key concerns as raised by the community included:
 - (a) Keep the playground the same size
 - (b) Increase the variety of equipment to cater for older children and more group play
 - (c) Use more natural materials
 - (d) Maximise and maintain the lawn area next to the playground
 - (e) Provide safe and accessible routes in and around the park
 - (f) Provide more seating and relocates bins
63. Community feedback also requested that Council, consider areas outside the park and playground including;
 - (a) Address safety concerns for pedestrians on Pring Street, particularly for school children moving between the school, park and McElhone Steps
 - (b) Consider public realm improvements on Dowling Street between the school and the playground
 - (c) Install public toilets nearby (subject to Development Application)
64. The revised concept plans were on exhibition from 10 May to 8 June 2023, and included a community presentation at the Juanita Nielson Community Centre. For a detailed description of the consultation process and findings refer to Attachment C.
65. The public consultation/exhibition on the revised concept plan involved the following:
 - (a) A letter sent to 3,225 local residents about the concept design and inviting them to provide feedback;
 - (b) A stakeholder email sent to local stakeholders, inviting them to give feedback on the proposal. The email was sent to:
 - (i) Youth and Family Connect
 - (ii) Juanita Nielsen Community Centre
 - (iii) Plunkett Street Public School

- (iv) Woolloomooloo Community Garden
 - (c) A webpage on SydneyYourSay showing the plans for the consultation from 10 May to 8 June 2023. 248 individual users viewed the page.
 - (d) Two Have Your Say A2 panels were installed in the park notifying the park users of the proposed works, providing contact details of the Delivery Manager and a web address to the SydneyYourSay page; and
 - (e) a pop-up consultation was held at the park on Friday 26 May 2023 from 3pm to 5:30pm to coincide with a community BBQ. Approximately 30 people attended this event.
 - (f) A presentation to the community on 1 June 2023 at the Junita Nielson Community Centre. The Lord Mayor hosted. This session was an opportunity for the community to view the revised plan, ask City staff questions and provide their feedback. The session was attended by approximately 30 residents.
66. We received a total of 16 submissions during the consultation period including 11 completed surveys, 4 email submissions and a petition from several school students.
67. The community told us they are strongly supportive of the final concept design and the upgrade would encourage them to use the park more. This was expressed through both the submissions and comments made during the community meeting.
68. While outside the scope of the park upgrade, the community is still concerned with traffic safety on Pring Street as well as the location of a new public toilet in the park surrounds. Both these issues are being looked at separately by Council officers. These have been addressed specifically in the Engagement Feedback Table (refer to Attachment C)
69. Community feedback was broadly in support of the revised scope as outlined in Attachment C, with community suggestions to be investigated and where possible incorporated into detailed design.

70. For Woolloomooloo Park and playground, this included:
- (a) A community mural on the inside wall of the playground;
 - (b) Upgrade tennis and basketball surface including reinstating the snake/eel print on the basketball court;
 - (c) Increase seating in BBQ area;
 - (d) Extend seating wall on the basketball court;
 - (e) Particular play equipment such as water-play, binoculars, flying fox and 'Hamster wheel'

KIM WOODBURY

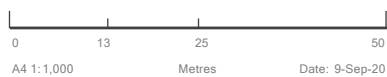
Chief Operating Officer

Belinda Graham, Delivery Manager

Lucy Farley, Design Manager

Attachment A

Location Plan and Site Photos



A4 1:1,000 Date: 9-Sep-20

View of playground from the corner of Pring Street and Dowling Street



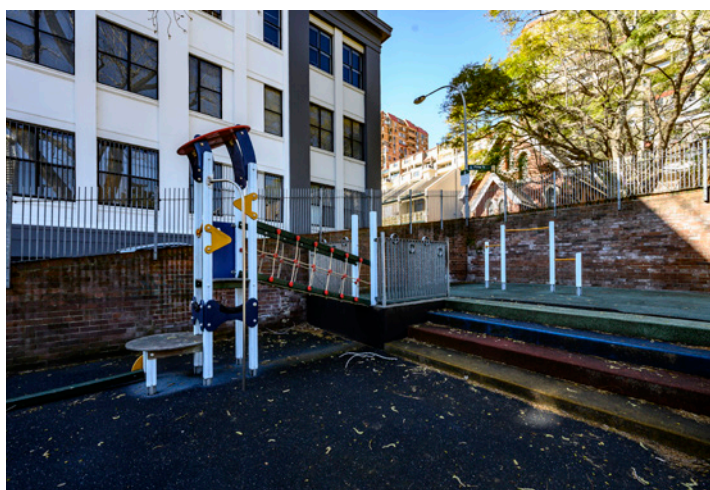
View towards playground of walkway and turf area



Existing play area including see-saw, balancing beam and play structures with climbing elements and slides

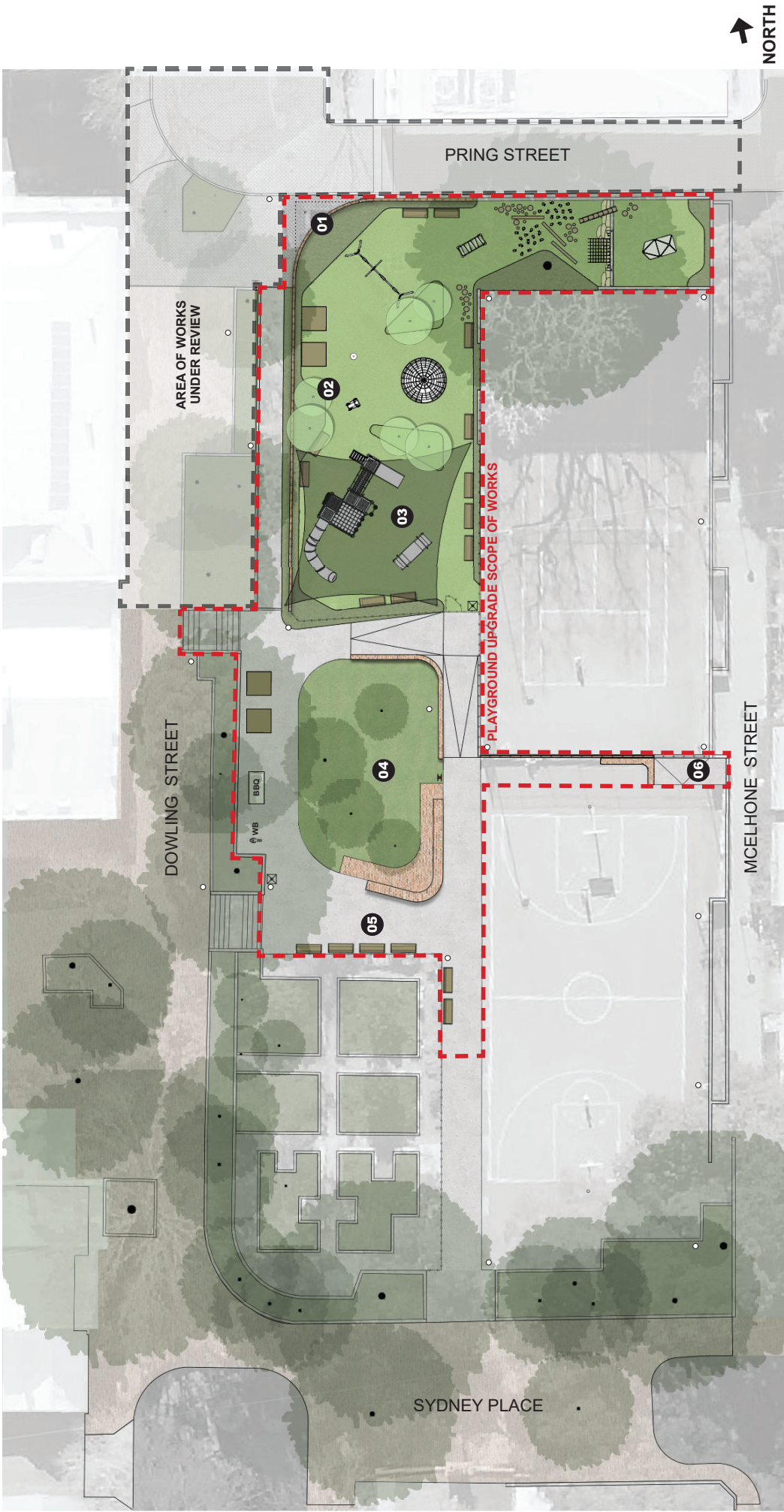


View of existing play area between Pring Street and tennis court



Attachment B

Revised Concept Plan



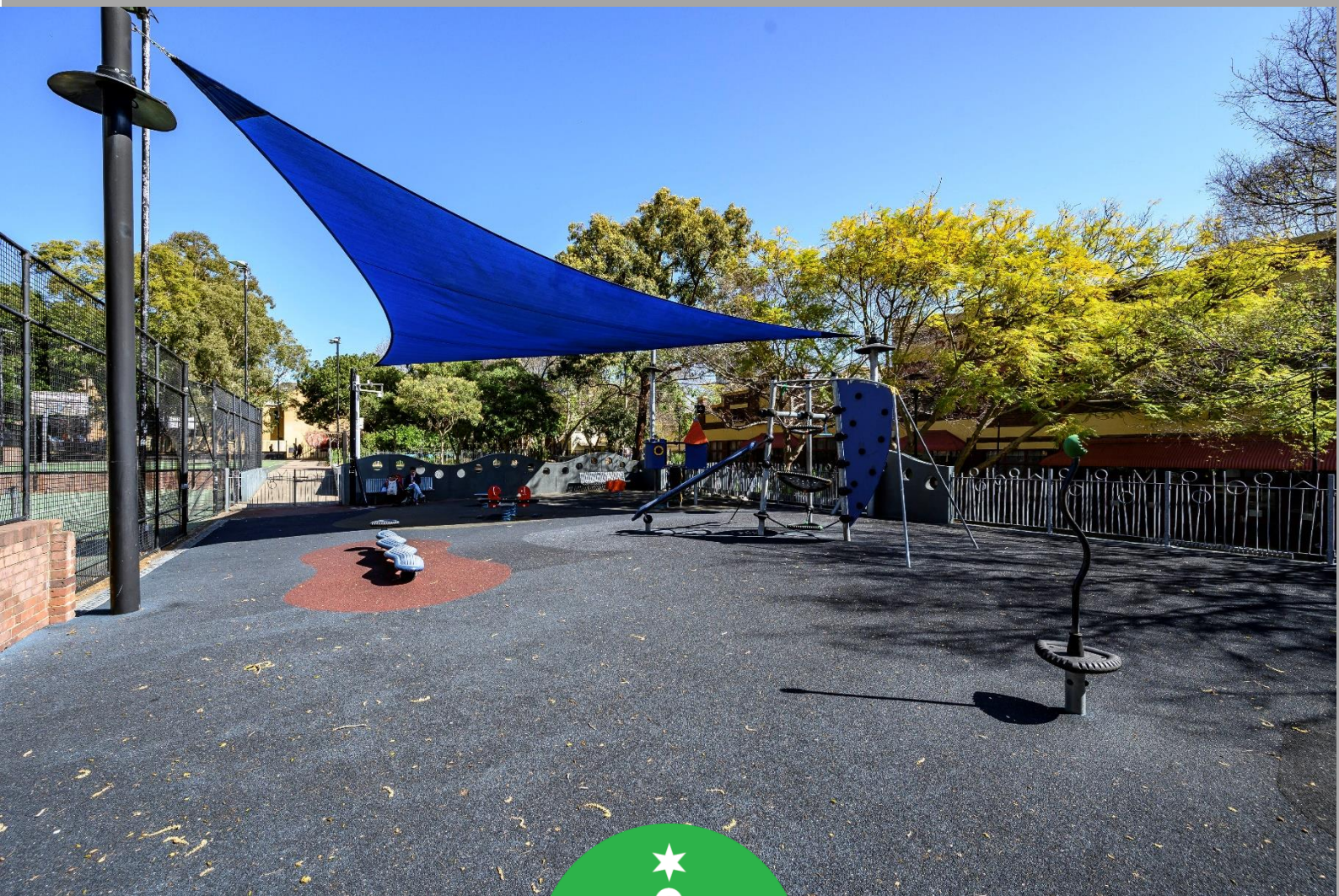
LEGEND

- Retain and protect existing trees
- New trees
- New concrete path
- New brick paths, stairs and seating walls
- New rubber soffit
- New planting
- Retain Shade Structure
- Retain BBQ
- New picnic platform
- New seating with back and arm rests
- New water bubbler with dog bowl
- New bins
- New park signage
- Lighting upgrade where required
- New 'Woolloomooloo' playground fence
- New trees and planting within the playspace
- New maintenance access to tennis court
- New playground (m2 area unchanged) including: Play structure with play panels, climbing net and slides, Swing set with x1 basket and x1 baby seat, Multi-user seesaw, Springer, Spinner, Large multi-user carousel, Rock climbing structure and Nature play elements including steppers, balancing beams, cluster poles, scrambling net and sandstone boulders.
- Increased natural turf area
- Increased seating opportunities
- New maintenance access to tennis court

Woolloomooloo Playground - Revised Concept Plan - May 2023

Attachment C

Engagement Report



Engagement report

Woolloomooloo Park and Playground,
Woolloomooloo

June 2023

Contents

Engagement summary	3
Engagement outcomes	5
Engagement activities	16

Engagement summary

Background

The City of Sydney is planning to upgrade Woolloomooloo playground as part of its park upgrade program. We are currently upgrading more than 35 parks across the City, from small pocket parks to larger neighbourhood parks.

In 2019/2020, the City consulted the community about plans to upgrade Woolloomooloo playground. The concept design was approved by Council in October 2020.

In late 2022, we conducted further consultation on the proposed design. We invited the community to give us feedback on the updated design. After this phase of consultation, significant changes were made to the design. The amended design was presented back to the community for comment in May 2023.

This report summarises the feedback received during the 2022 and 2023 community consultations.

Overview of activities

Following the community's request to undertake further consultation on the approved design, the City undertook extra activities in late 2022 and then in May and June of 2023 to ensure that the community had more opportunities to provide feedback and discuss their issues and concerns with staff.

These consultation activities included:

- 21 November 2022: workshop with Plunkett Street Public School students (20 attendees)
- 25 November 2022: staff attended a Woolloomooloo community BBQ to discuss the design
- 6 December 2022: community workshop at Woolloomooloo playground (approx. 50 attendees)
- 10 May to 8 June 2023: amended concept design on exhibition
- 26 May 2023: staff attended a Woolloomooloo community BBQ to discuss the revised design
- 1 June 2023: community meeting to discuss design and speak to Council officers (approx. 30 attendees)

Purpose of the engagement

The purpose of the engagement was to:

- gather feedback from stakeholders and the community about the proposed upgrade
- determine the level of satisfaction with the revised concept design.

Engagement Outcomes

Summary of engagement activities undertaken in 2023

From 10 May to 8 June 2023, we asked the community for feedback on a revised concept plan to improve Woolloomooloo Playground, Woolloomooloo.

Consultation activities included online engagement, a letter to residents and project signage at the park, attending the community barbeque and a community meeting hosted by the Lord Mayor.

The community meeting was attended by 30 people. We received a total of 16 submissions including 11 completed surveys and 5 email submissions and a petition from students from Plunkett Street Public School. The Sydney Your Say page was visited 248 times during the consultation period.

The community told us they are strongly supportive of the final concept design and the upgrade would encourage them to use the park more. This was expressed through both the submissions and comments made during the community meeting.

While outside the scope of the park upgrade, the community is still concerned with traffic safety on Pring Street as well as the location of a new public toilet in the park surrounds. Both these issues are being looked at separately by Council officers.

Community meeting

The Lord Mayor hosted a community meeting on Thursday 1 June 2023 at the Juanita Nielson Centre, Woolloomooloo. This meeting was an opportunity for the community to view the revised plan, ask City staff questions and provide their feedback. The meeting was attended by approximately 30 residents.

A summary of the issues raised is below:

Park and playground

- Suggest installing solar bench seats that could be used to charge mobile phones
- Support to maintain the “Woolloomooloo” text in the playground fence design
- Suggest the City and community work together to create a mural on the inside wall of the playground, honouring the heritage and culture of past and present users. Archived photos could be used
- Request native plants be used in the playground

Road Safety

- Suggest installing temporary safety measures to Dowling Street/Pring Street, such as planter boxes or rainbow markings to deter children from skating and scooting down entry ramp into Pring Street /Dowling Street
- A request was made to repaint speed limit markings on the road as they have worn off

Public Toilet

- Concerned about anti-social behaviour in the toilet, such as people playing music and drug use
- Request was made for any new toilet installed in the park to be within line of sight of the playground.

Dowling Street public domain

- Suggest creating an amphitheatre on Dowling Street between the school and playground.

Survey results

We received a total of 16 submissions during the consultation period including 11 completed surveys, 4 email submissions and a petition from several school students. The Sydney Your Say page was visited 248 times during the consultation period.

Survey results

Residents were asked to select how they felt about the various design elements proposed in the park by selecting either; strong support, support, neutral or do not support.

The design elements were:

- A fully fenced playground which is the same size as the existing one
- A play structure with climbing net and slides
- A basket swing and a swing with baby seat, a multi-user seesaw, a springer and spinner, monkey bars, a climbing net carousel and a rock-climbing structure
- Nature play including steppingstones and logs, cluster poles, sandstone boulders and scrambling net
- New plants and trees in playground
- A larger grass area
- Better connection between the playground and the barbecue area
- More seating in both sunny and shaded locations
- Relocated bins
- A new water bubbler and dog bowl

The residents overwhelmingly selected 'strong support' for all the elements in the proposal.

Subjects/topics raised in submissions

Several subjects/topics were raised in the feedback received. These were presented as concerns, suggestions and/or requests and are summarised below:

Comments	Total
Incorporate the cultural history of the area through a mural/artwork in the playground	2
Install binoculars in the play space so children can look down Dowling Street towards the wharf	2
Upgrade the tennis and basketball courts as part of the project. Reinstate the snake/eel previously on the basketball court.	2
Change the mural in the tennis court every 5 years like is done with the basketball court	2
Ensure native plants are used in the playground	1
Move the two picnic seating platforms near the BBQ to the edge of the grass area in the shade	1
Make sure there is power for community functions, previously had DJs on the tennis courts.	1
Shift the planting near the swings further back so they do not get trampled by children playing	1
Integrate nature play elements into the garden beds to free up space for more play areas	1
Include a flying fox in the playground	1
Install two more bins in the park	1
Install two more picnic seating platforms around the edges of the grass area under the trees	1
Install planter boxes at the bottom of the sloping pathway at Dowling and Pring Street to stop skateboard and scooter riders from riding onto the road	1
Install toilets	1
Please extend the new seating wall on the basketball court for more seating	1
Include water play elements in the playground	1

Plunkett Street Primary School students petition

A petition was received from several students at Plunkett Street Primary School asking for a 'Hamster Wheel' to be installed in the new playground.

Plunkett Street Primary School

Dear Clover Moore,

Please can we have a hamster wheel in our new playground in Woolloomooloo?
We can all play in it together.

Mateo
Gunnantha
mimi



Ben
Lora
N!

Aikeda
Jannali
Belynda
Jaster
Rocco James
Samson
TYNAN
Alex
Jakkheil
Raiph
Mika
carter
charlie
benjamin
benji
JOhe
Tyrus
definetly good idea
Lin the great!!
ALESSIO
YAYA
Agrob
Myah
Savannah
amazing!
NEB
uriah
Anna's
Val
ESon
Jett
by
Nico

Community BBQ

Staff attended a community BBQ at Woolloomooloo playground on Friday 26 May. The BBQ was attended by approximately 30 community members and staff were onsite to answer questions about the proposal. Overall, the community were very supportive of the new design and appreciative of the changes that had been made.

Comments from the day are covered in the submission table above.

Outcomes from activities undertaken in 2022

Plunkett Street Public School workshop

Council staff held a workshop with approximately 20 students between the ages of 9 and 12 at Plunkett Street Public school on 21 November 2022.

Students were split into small groups and, with a staff member, given an activity sheet to fill in asking them what they liked in the park and what they would like to see in the new design.

The key themes received from the students were:

- More social play elements that can be used by more than one person at a time such as basket swings, merry go rounds, see saws
- More adventurous play elements such as rock walls, spinners and climbing platforms and flying fox
- Equipment that could be used by children of all ages



Group Name:


Group Members:

Ages:



What we like about the park and playground?

What could be better about the park and playground?


 Monkey Bars
 Slides
 Okay — has alot equipment
~~A bit~~ I like the trees
 castle and binoculars
 spinners Fire man pole
 see saws Play towers

Spinner
 flying fox
 Too much equipment
 A bit old
 Zip line
 bubblers Ropes
 Dog bowls Shelter
 tube chairs rock wall

Woolloomooloo Playground - Plunkett Street School Consultation

CITY OF SYDNEY



Group Name:

Group Members:

Ages:

What we like about the park and playground?

What could be better about the park and playground?

Side
 See saw
 the wall near the chair
 I like the little house
 I like the pirate ship
 I like how it's not clean :-
 I like the house thing
 I like it but meh.
 treehouse

monkey swing
 monkey bars
 merry go round
 more hiding spot!!!!!!
 chess game board
 BIG
 treehouse
 flying fox
 trampoline
 100%
 more cleaner
 mesh
 jumping castle
 monkey bars
 cling bars
 brig

Woolloomooloo Playground - Plunkett Street School Consultation

CITY OF SYDNEY

Community workshop

The community workshop was hosted by the Lord Mayor in Woolloomooloo Park on 6 December 2022. It was attended by approximately 50 community members.

City staff provided an overview of the proposed plan. Attendees were split into groups and walked around the park with City staff to discuss various elements of the design. Notes from these discussions are included below.

Attendees were asked to fill out a feedback form. A total of 37 feedback forms were received. Of these forms 10 made suggestions relating to the park as a whole, 7 focussed exclusively on the playground and 13 highlighted individual issues.

A majority of people who filled in a form supported changing traffic access to Pring Street and were also happy to delay the playground upgrade to ensure the design better aligned with the views of the community.

Key themes raised during the onsite community workshop:

- Safety and accessibility – provide safe and accessible routes in and around the park
- Pring Street – address safety concerns for pedestrians particularly for school children moving between the school, park and McElhone Steps
- Green space – maximise lawn area and maintain the tree canopy
- Playground design – retain the size of the playground
- Play equipment – increase the type of equipment with more group play opportunities, challenging equipment and natural elements.
- Park amenities – provide more seating and relocate bins and
- Public toilets - install public toilets nearby the park

Community workshop – feedback forms

What do you like about the existing park:	
Comments	Total
The open grass area around the BBQ/ place for picnics	10
The size and open space in the play area	9
The sense of community/history	7
The free access to tennis and basketball courts	7
The varied play equipment for all ages	5
The community garden	5
The shade and number of trees	4
One access gate with secure fencing/no entry near the roadway	5
The lights at night	2
Integrated playground and exercise equipment	1
The distinct separation between the different areas	1

Suggestions about the design:	
Comments	Total
Increase the grass area in the park	10
Maintain the existing grass area around the BBQ	7
Remove the Pring Street entrance to the playground	7
Install permanent toilets closer to the park	4
Maintain/increase the current playground size	4
Integrate more seating into the design	3
Suggestions for new/additional play equipment:	3
<ul style="list-style-type: none"> • Sand pits • Climbing structures • Bucket swing • Multiple slides • Two person swings • Trampolines • Monkey bars 	
Create an amphitheatre on Dowling Street between the playground and the school	3
Extend/integrate the playground into the garden beds on Dowling Street	3
Remove the community garden and create more open space	2
Install shade over the tennis courts	2
Maintain the area as is and only replace the play equipment	2
Include more natural elements in playground equipment	2
Apply a natural tone playground with native elements and cultural inclusions	1
Better security measures to deter anti-social behaviour	1
Minimise access path so as not to take up playground space	1
Install rubbish bins close to the fenced playground area	1

Do you support closing Pring Street:	
Comments	Total
Yes	21
No	11
No opinion	5

Are you happy to delay the project to undertake further design changes:	
Comments	Total
Yes	22
No	0
No opinion	15

Community workshop - group discussion feedback

Group one – 6 residents

- **Playground size**
 - Do not want to see a reduction in the playground size.
 - Preference to make playground area as large as possible.
 - Increase playground area by moving playground outwards, perhaps onto Dowling Street
- **Pring Street**
 - Support Pring Street closure
 - Do not support bleachers on Pring Street corner
 - One resident raised concerns about emergency vehicle access in the area if the street was closed
- **Gate locations –**
 - Concern about gate facing Pring Street
 - Preference to have one gate into playground
- **Playground equipment and materials**
 - Preference more social play items - basket swing and 4-person seesaw
 - Would like more natural materials/elements used in the playground design
- **BBQ lawn Area**
 - Maintain the existing grass area around the BBQ
- **Fitness equipment**
 - Divided about fitness area being inside playground – understood best practice but preference to have separate.
- **Bin locations**
 - Would like bins installed closer to the playground so parents can access without leaving the play area.

Group two – 4 residents

- **Playground size**
 - Do not want to see a reduction in the playground size
- **Pring Street**
 - Residents responded they have never seen any conflicts between cars and children at the corner of Pring Street
 - Do not support bleachers on Pring Street corner
- **Gate locations**
 - Would like to see both the gates within the space closer to the southern end/ maybe facing onto Dowling Street
- **Playground equipment and materials**
 - Make sure the equipment is open and easily visible
- **BBQ lawn Area**
 - Maintain the existing grass area around the BBQ
- **Fitness equipment**
 - Would like to see the fitness equipment removed and the space incorporated back into the playground
 - Asked that the fitness equipment be moved to Bourke Street closer to where the older children gather
- **Activation of the Dowling Street**
 - Investigate incorporating the lower terraced/ garden space into the playground
 - The interface with the school is undervalued and the school was open to using the space, noting there was a large hall and kitchen that faced onto the street

- **Courts**
 - Investigate making the tennis court a more multi use space so it could be used for other ball sports
- **Seating**
 - Install more seating around the playground and BBQ area

Group three – 5 residents

- **Playground size**
 - Do not want to see a reduction in the playground size
 - Preference to make playground area as large as possible
- **Pring Street**
 - One resident strongly opposed the idea of closing Pring Street as it would cause access issues
 - Create a safe crossing point to improve the conditions on the street
- **Gate locations**
 - Concern about gate facing Pring Street.
 - Preference to have one gate but understands safety issues and best practice so would prefer to have two gates if they are not facing Pring Street
- **Playground equipment and materials**
 - Would like a bucket swing installed
 - Would like the fence to be tall enough that children cannot climb over
- **Fitness equipment**
 - Retain the exercise equipment and include dip bars
- **Bin locations**
 - Would like bins installed closer to the playground so parents can access without leaving the play area
- **Community garden**
 - Preference for the community garden to be removed or relocated and substituted for more play area for children

Group four – 8-12 residents

- **Playground size**
 - Do not want to see a reduction in the size of the playground size
 - Extend the playground further south if possible
 - Remove the internal fencing as it reduces the play area
- **Pring Street**
 - Support Pring Street closure
- **Gate locations**
 - Concern about gate facing Pring Street
 - Preference to have one gate into playground
- **Playground equipment and materials**
 - Use a similar material palette to the new Ultimo playground
 - Install more informal seating in the playground area
- **BBQ lawn Area**
 - Maintain the existing grass area around the BBQ
- **Activation of the Dowling Street**
 - Upgrade the public domain generally, retain the trees, retain the ramped walkway, make more usable for the school by making an amphitheatre on the northern section, repave the whole area as it is uneven and tired
- **Fitness equipment**
 - Include female friendly exercise equipment
- **Bin locations**

- Would like bins installed closer to the playground so parents can access without leaving the play area.
- **Community garden**
 - Relocate the community garden to Denis Winston Place to extend the grass area in the park.

Plunkett Street Public School Parents and Citizens Association

The Plunkett Street Public School Parents and Citizens Association wrote to the City on 25 November with their feedback on the park design.

They asked the City to:

- Not reduce the size of the playground or the amount of equipment and have it fully enclosed with exercise equipment inside
- Close Pring Street to traffic and remove the proposed Pring Street entrance and bleachers and only have one entrance to the playground
- Remove the pathway alongside the tennis court
- Create an amphitheatre on Dowling Street between the playground and the school
- Maintain the existing grass area around the BBQ
- Integrate seating in the playground amongst the planting
- More play equipment and opportunities for children to play together
- Use more natural materials for the play equipment rather than plastic
- Use soft fall around the swings
- Use an open slide rather than closed design for safety and ease of cleaning
- Maintain the Woolloomooloo letter metal fence around the playground if possible
- Consider how the history and stories from Woolloomooloo residents could be integrated into the playground/park as part of the design

Engagement activities

Overview of activities undertaken to support the consultation

1. Sydney Your Say webpage

A Sydney Your Say webpage, <https://www.cityofsydney.nsw.gov.au/proposed-works-maintenance/your-feedback-proposed-woolloomooloo-playground-upgrade> was created. The page included an electronic copy of the revised concept design, survey and other key information about the consultation.

The page was viewed 248 times during the consultation period.

2. Consultation letter

A letter was posted to 3,225 residents, inviting them to give feedback on the proposed design.

3. Community meetings

6 December 2022: community workshop at Woolloomooloo playground (approx. 50 attendees)

June 2023: community meeting to discuss design and speak to Council officers (approx. 30 attendees)

4. Children's workshop at Plunkett Street Primary School

A design workshop was held with students at Plunkett Street Primary School on Monday 21 November.

5. Community Neighbourhood BBQ

25 November 2022: staff attended a Woolloomooloo community BBQ to discuss the design

26 May 2023: staff attended a Woolloomooloo community BBQ to discuss the revised design

6. Signage

Nine signs were placed in the park and the surrounding area informing people of the consultation.

Document is Restricted